



**MODEL 200
PAVEMENT CUTTER
SELF-PROPELLED KIT
INSTRUCTION MANUAL**

**PART MANUAL - 31490
REV. 0**

MODEL 200 PAVEMENT CUTTER SELF-PROPELLED ROUTER KIT



Original: 1/2003

TABLE OF CONTENTS

Model 200 Pavement Cutter Self-Propelled Kit.....	6
Safety Precautions.....	7
Limited Warranty.....	8
Warranty Claim Instructions.....	9
Storing the Machine/Instruction for Ordering Parts.....	10
Bill of Material Checklist for Self-Propelled Router.....	11-12

Instructions

Preparations for Removing the Belt Guard, Drive Belts, Wheels, Battery Box, Clutch Handle, and Clutch on the Existing Crafcro Router.....	13
Instructions for Mounting the Self-Propelled Router Kit - Crafcro Part Number 31450.....	14
Instructions for Installing the Clutch with the Stub Shaft to the Existing Router Engine Crank Shaft.....	15
Instructions for Installing the Wheel Drive Kit Assembly.....	16
Instructions for Installing the Front Drive Sprocket Wheel Shaft Assembly.....	17
Instructions for Installing the Drive Train.....	18
Instructions for Installing the Clutch Control Cable.....	18
Instructions for Installing the Frame Cable Holder.....	18-19
Instructions for Installing the Tires.....	19
Instructions for Installing the Guard.....	19

Drawings

Self-Propelled Router Kit Drawing 31450A.....	20
Self-Propelled Router Kit Drawing 31450B.....	21
Self-Propelled Router Handle Assembly Drawing 31476A.....	22

Photos

Router Frame Housing/Drive Wheel Mounting Holes.....	23
Engine Support Plate/Cable Bracket Holder.....	24
Engine Support Plate/Sprocket/Drive Plate Assembly.....	25
Battery Support Tray.....	26
Battery Support Tray Channel.....	27
Router Handle/Cable Bracket Holder.....	28
Router Handle Assembly/Handle Drive Assembly.....	29
Drive Cable/Cable Bracket Holder.....	30
Router Cutter Head Handle Drive Assembly.....	31
Engine Crank Shaft/Clutch Inner Washer.....	32
Clutch, Pulleys, Router Head Pulleys/Cutter Head Belts.....	33
Clutch Electric Wiring.....	34
Router Hub/Wheel Spacer.....	35
Self-Propelled Router Wheel Drive Kit.....	36
Engine Support Frame Spacer.....	37-38
Engine Support Frame Hardware.....	39
Roller Chain Sprocket/Pillow Block Bearing.....	40

TABLE OF CONTENTS

Photos

Drive Chain/Master Link/Sprocket/Idler.....	41
Detent-Drive/Cable Clevis Pin.....	42
Side View of the Self-Propelled Router Kit.....	43
Engine Support Frame/Cable Bracket Holder.....	44
Cable Bracket Holder.....	45
Handle Drive Switch Control Wiring.....	46-47

Drawings

Drive Wheel Clutch Assembly.....	48
Self-Propelled Drive System.....	49

MODEL 200 PAVEMENT CUTTER SELF-PROPELLED KIT

This manual is furnished with each new **CRAFCO MODEL 200 PAVEMENT CUTTER SELF-PROPELLED KIT**. This manual will help your machine operators learn to run the machine properly and understand its mechanical functions for trouble-free operation.

Your **CRAFCO MODEL 200** is designed to give excellent service and save maintenance expense. However, as with all specifically engineered equipment, you can get best results at minimum costs if:

- (1) You operate your machine as instructed in this manual, and
- (2) Maintain your machine regularly as stated in this manual.



WARNING:

The engine exhaust from this product contains chemicals known to the State of California to cause cancer, birth defects or other reproductive harm. Operate in well ventilated area only. Engine exhaust is deadly.

Manufactured under U.S. Patent Numbers 4,175,788, and 4,204,714, and Canadian Patent Number 1,098,355.

Other Patents Pending.



SAFETY PRECAUTIONS

1. Eye and ear protective devices are required when operating the CRAFCO Model 200 Pavement Cutter. A respirator should also be worn if the surface being worked with is dry.



2. Care should be taken when operating machine on grades. It is usually best to operate the machine going uphill.
3. To stop or slow machine, push down on handle.
4. When cleaning joints near moving traffic, always move in a direction away from traffic to protect the operator.
5. Tires should be inflated to 45 psi to allow machine to roll easily.
6. Never transport the router with the engine running (unless it has a self-propelled router kit installed).
7. Never exceed maximum recommended engine RPM.
8. Never leave router unattended while engine is running.
9. Never stand on any part of the machine.
10. The only operating position is behind the pavement cutter with both hands on the handle.
11. Wear long pants and heavy leather boots or shoes.

MODEL 200 PAVEMENT CUTTER SELF-PROPELLED KIT LIMITED WARRANTY

Crafco, Inc., through its authorized distributor, will replace for the original purchaser free of charge any parts found upon examination by the factory at Mesa, Arizona, to be defective in material or workmanship. This warranty is for a period within 60 days of purchase date, but excludes engine or components, tires, and battery as these items are subject to warranties issued by their manufacturers.

The responsibility of Crafco under this warranty is limited to replacement or repair of defective parts at Crafco's Chandler, Arizona factory, or at a point designated by it, of such parts as shall appear to Crafco, upon inspection at such point, to have been defective in material or workmanship, with expense for transportation to be born by the original purchaser. The labor covered by this warranty includes only that labor which is required to repair the defective part itself, and not that labor required to gain access to the part.

Crafco, Inc. shall only be liable when the equipment is used in compliance with those directions specified in the manufacturer's instructions.

The warranty provided herein extends only to the repair and/or replacement of those components on the equipment covered above and does not extend to incidental or consequential damages incurred as a consequence of any defects covered by this warranty.

This warranty shall not apply to any machine or parts altered and modified without Crafco's consent, nor shall it apply to normal wear and tear or when misuse, negligence or accident are evident, or when machines have been operated at speeds or loads beyond factory-rated capacities or specifications.

All warranties expressed or implied are void if other than genuine Crafco cutters and pins are used.

Crafco, Inc. specifically disavows any other representation, warranty, or liability related to the condition or use of the product.



WARNING:

Use of replacement parts other than genuine Crafco parts may impair the safety or reliability of your equipment and nullifies any warranty.

WARRANTY CLAIM INSTRUCTIONS

Please follow the instructions stated below when calling in a Warranty Claim. Failure to follow these procedures may be cause to void the warranty.

1. Call your local CrafcO Distributor. If you do not know who your local distributor is, call a CrafcO Customer Service Representative, (Toll Free 1-800-528-8242) for name, location, and telephone number.
2. On contacting the distributor, be prepared to identify the serial number, model number, engine model, engine manufacturer, and the date of purchase if available.

Serial Number: _____

Model Number: _____

Engine Model (H.P.): _____

Engine Manufacturer: _____

Date of Purchase: _____

3. Should the cause of the malfunction be a defective part, the Distributor will advise you of the procedure to follow for a replacement.
4. The warranty is valid only for parts, which have been supplied or recommended by CrafcO, Inc.

If you have any additional questions regarding warranty repairs and parts, please do not hesitate to call toll free 1-800-528-8242.

CRAFCO, INCORPORATED
25527 SOUTH ARIZONA AVENUE
CHANDLER, AZ 85248
480-655-8333
Toll Free 1-800-528-8242

STORING THE MACHINE

DO NOT rest the weight of the machine on the rubber rock deflector or rubber will become deformed making deflector nonfunctional. Store with engine in a near level position.

INSTRUCTION FOR ORDERING PARTS

Parts may be ordered from your local CRAFCO distributor or directly from CRAFCO, Inc. if a distributor is not available in your area. When ordering parts, give the following information:

1. Part Number
2. Machine Model
3. Serial Number from Name Plate

Write, telephone or fax:

CRAFCO, INC.
25527 SOUTH ARIZONA AVENUE
CHANDLER, AZ 85248
480-655-8333
480-655-1712 (FAX)
Toll Free: 1-800-528-8242

BILL OF MATERIAL CHECKLIST FOR SELF-PROPELLED ROUTER

CHECK	ITEM	PART NUMBER	QTY	DESCRIPTION
	1	28526	4	3/8"-16 N.C. ESNA-TYPE LOCK-NUT
	2	28538	2	3/8"-16 N.C. STOVER C-TOP NUT
	3	28569	1	5/8"-24 N.F. EXTRA FINE HEX NUT
	4	28636	2	1/2" FLAT STEEL WASHER
	5	28643	2	6MM FLAT STEEL WASHER
	6	28648	1	7/16" LOCKWASHER
	7	28649	2	1/2" LOCK WASHER
	8	28654	2	6MM LOCK WASHER
	9	28670	2	1/4" SAE FLAT WASHER
	10	28672	13	WASHER 3/8" SAE FLAT
	11	28673	2	7/16" FLAT WASHER
	12	28688	2	CLUTCH INNER WASHER
	13	28732	4	3/8"-16 N.C. THREAD X 1-1/4"
	14	28761	2	1/2"-13 N.C. X 1-1/4" BOLT
	15	28733	4	3/8"-16 N.C. X 1-1/2" LG HEX HEAD BOLT
	16	28903	1	7/16-20 N.C. X 4" HEX HEAD BOLT
	17	29044	2	6MM 1.0 X 25MM HEX BOLT
	18	29734	1	SPRAY PAINT CRAFCO RED
	19	31106	1	SAFETY PRECAUTION PLATE
	20	31337	2	SWITCH HOLDER
	21	31339	1	SWITCH/ROUTER W/O ELECTRIC CLUTCH
	22	31450A	1	ROUTER KIT DRAWING - SELF-PROPELLED
	23	31450B	1	ROUTER KIT DRAWING SELF-PROPELLED
	24	31452	1	PIVOT PIN-ROUTER HANDLE
	25	31455	1	HANDLE DRIVE ASSEMBLY-PROPELLED

BILL OF MATERIAL CHECKLIST FOR SELF-PROPELLED ROUTER

CHECK	ITEM	PART NUMBER	QTY	DESCRIPTION
	26	31458	4	FLANGED BEARING ROUTER HANDLE
	27	31459	1	CABLE BRACKET HOLDER FRAME
	28	31461	1	HANDLE DRIVE ASSEMBLY-PROPELLED
	29	31466	2	ROUTER GUARD SPACER
	30	31468	1	LOWER FRAME CABLE HOLDER
	31	31471	2	STANDARD CLEVIS PIN
	32	31472	2	COTTER PIN 3/32" X 0.75" LONG
	33	31475	1	SIDE MOUNTED BELT GUARD ASSEMBLY
	34	31476A	1	ROUTER HANDLE ASSEMBLY-SELF PROPELLED
	35	31477	2	SWITCH HOLDER - SELF PROPELLED
	36	31478	1	BELT A-43 ROUTER
	37	31479	1	DRIVE CHAIN-ROUTER
	38	31480	1	SELF-PROPELLED ROUTER (PURCHASE)
	39	31481	1	BATTERY TRAY SUPPORT
	40	31482	1	CAST IRON FINISHED BORE V-BELT PULLEY
	41	31483	1	WHEEL SPACER-SELF PROPELLED
	42	31484	1	SPACER-ROUTER CLUTCH PLATE
	43	31485	1	WASHER-SPACER 5/8" FLAT STAINLESS STEEL
	44	31486	1	POWER WIRE-SWITCH ROUTER
	45	31487	1	STUB SHAFT SELF-PROPELLED ROUTER
	46	31488	1	CABLE & CABLE GUIDE CLEVIS
	47	31490	1	SELF-PROPELLED KIT INSTRUCTION MANUAL
	48	37032	1	BRUSH SHAFT KEY 1/4" X 1-1/4" LONG
	49	39524	1	MASTER LINK-#40
	50	28685	1	INTERNAL TOOTH WASHER

PREPARATIONS FOR REMOVING THE BELT GUARD, DRIVE BELTS, WHEELS, BATTERY BOX, CLUTCH HANDLE, AND CLUTCH ON THE EXISTING CRAFCO ROUTER

Please read entire instructions before starting!

Tools required:

- Drill bits -17/32" - clearance for the 1/2" studs
 -25/64" - clearance for the 3/8" bolts
 -13/64" - clearance for the 10-32 bolts
 -1/4" - clearance for the 1/4" pin
 -5/8" - for the 5/8" bushing
- Hand drill
- Center punch
- Hammer
- Tape measure
- Wrenches -3/8 7/16 1/2 9/16 3/4 13/16
- Allen wrenches -3/16 1/4 5/16
- Grinder
- Welder
- Cutting torch
- Flat headed screw driver

1. Remove battery cables, battery, and battery box from the machine. Set them aside for later use. Remove the positive (+) battery cable from the battery. This will protect the machine and the safety of the worker.
2. Remove existing belt cover on passenger side of machine.
3. Remove the top (2) 7/16" bolts. The (2) 7/16" bolts are located half way down the side of the engine cover. The (2) 7/16" bolts hold the belt cover to the engine housing and they hold the belt cover to the existing router frame.
4. To remove the existing drive belts, first, loosen the 3/4" jam nuts under the engine mount plate. The front fuel tank locates the belt tensioner. The belt tensioner is painted black and is located on the passenger side of the machine.
5. Remove the wheels. The router will need to be set on a set of wooden blocks. The router will need to be secured to prevent the router from falling over and injuring someone. The router weighs approximately 650 lbs.
6. Remove the clutch. Unplug the electrical connection in the wiring loom. The electrical connections are located in the wiring loom next to the starter. The electrical connections can be pulled apart with your hands. Next, remove the clutch, (1) 7/16" bolt holds the clutch on. The bolt is installed with a drop of locktite. The bolt will need to be heated slightly. This will free up the locktite holding on the bolt. You must hold the clutch and the engine from turning while removing the one 7/16" bolt.
7. Remove the battery box tray. CrafcO suggests using a grinder to remove the existing battery tray. You will need to save the tray for later use. However, the existing battery tray support bracket is disposable since you will be receiving a new bracket.
8. Remove existing switch holder bracket from handle assembly. You will be welding new brackets on later in the assembly process.
9. Remove the existing router clutch engagement handle. The router clutch engagement handle is located at the top of the router handle. You may want to just cut the existing router clutch engagement handle off. Reference in the new installation kit. You will be receiving a new set of handles to use.
10. On newer model routers there will be a tie down bracket on front of router (see drawing 31450B on page 20. This bracket will need to be removed.

INSTRUCTIONS FOR MOUNTING THE SELF-PROPELLED ROUTER KIT CRAFCO PART NUMBER 31450

1. On the router, the existing battery box tray will need to be moved to a new location. See drawing 31450A on page 19. Also, see pictures on pages 25 and 26. Weld new tray support to existing tray then weld to router frame.
2. A couple of slots will need to be added to the existing router engine mount plate assembly. CrafcO part number 32190. See drawing number 31450A. See page 19 and 24.
3. A total of four holes will need to be drilled in the router frame. Both tires will need to be removed. Before removing the tires, block both sides of the router. This will prevent the router from falling over. See drawing 31450B on page 20. Drill 7/16" diameter through 4 holes required. The passenger and driver's side router frame will both get drilled. Do not install the wheels at this time. (See photo on page 22).
4. A total of (2) holes will need to be drilled on the top of the engine mounting frame. Drill through a diameter of 13/32". See drawing on page 19. See photo on page 23.
5. On the upper part of the router handle, the existing switch holder will need to be cut off. Then weld item 8 (switch holder bracket) drawing 31476A on page 21 to the existing router handle.
6. Begin assembling parts on the existing router handle assembly. Remove the existing control handle assembly. CrafcO part number 31258. See drawing 31476A on page 21. Drawing number 31476A on page 21 will be used to assemble the new router handle assembly - self propelled.

Item 13 part number 31459 and item 8 part number 31337 will be welded to the existing router handle. See router handle/cable bracket holder photo on page 21 and 27.

The parts will need to be painted after they cool down. On drawing 31476A on page 21 find view "a". Item 10, part number 31461, item 11, part number 31452, item 12, part number 31455, item 1 part number 28672, item 14, part number 28538 are the next items to be installed to the existing router handle.

See page 28 and page 30 in parts manual book. A hard copy of the drawing will be in the kit.

The steps listed above will cover the holes that are drilled in the frame. It will cover the router handle assembly.

INSTRUCTIONS FOR INSTALLING THE CLUTCH WITH THE STUB SHAFT TO THE EXISTING ROUTER ENGINE CRANK SHAFT

First, remove the existing clutch from the router. The existing clutch will need a stub shaft (part number 31487 on page 32) press fitted and welded. The existing clutch will have a stub shaft press fitted in the clutch bore. The stub shaft will need to be straight. This is a must. CrafcO will use a fixture at the plant to ensure that it is straight and true. **NOTE: Remove existing clutch on router and send existing clutch to CrafcO for welding stub shaft on existing clutch.** See photo on page 32 in the part manual.

You will need to leave the existing clutch inner washer (part number 28688). Install another clutch inner washer part number 28688. Install the existing router key that came off with the clutch (key 1/4" x 3-1/4" long). See photo on page 31.

Place the clutch, with the stub shaft welded to it, on the engine crank shaft. A bolt will run through the center of the stub shaft. The hardware required is a 7/16"-24 N.F. x 4" long hex head bolt; (1) 7/16" flat washers; (1) 7/16" lock washer. Use Loctite on threads and torque bolt to 60ft-lbs. See photo on page 32. The clutch retaining plate will need to be bent slightly so it will sit inside of the clutch retaining bracket properly. This can be done by pushing on it with your fingers.

The black wire from the electric clutch will be grounded to the engine frame. See photo on page 33.

Use a framing square to ensure proper alignment. If the pulleys are out of alignment move the cutter head pulley in or out. See photo on page 32.

Install the existing cutter head pulley belts. See photo on page 32.

On the passenger side of the router install part number 31483 wheel spacer - self-propelled router. See photo on page 34. The wheel is off. Do not put the wheel on yet.

INSTRUCTIONS FOR INSTALLING THE WHEEL DRIVE KIT ASSEMBLY

Wrap part number 31478 belt A-43-router on the large sheave/disc. See photo on page 32. Swing the assembly in place. The machined block on the wheel drive kit assembly will go behind the existing engine mount base plate. The idler-sprocket (17 tooth) will need to face toward the front of the machine. See photo on page 36. Note: the idler-sprocket will be loaded with the tension in the down position. The belt may be difficult to put on because of the idler-sprocket.

The spacer-router clutch plate (part number 31484) will be slipped in between the router engine mount frame and the wheel drive kit assembly. See photo on page 34. The spacer plate is placed in between the mill slot and the router frame.

Use: hardware

28761 (2) 1/2"-13 N.C. x 1-1/4" bolt

28636 (2) 1/2" flat washers

28649 (2) 1/2" lock washers

See photo on page 38.

The hardware listed above will be used to lock the assembly in place. The bolts used to install the drive sprocket clutch assembly will be used to tighten the drive belt A-43 (part number 31478). Use locktite on the bolt threads. Do not over tighten belt.

INSTRUCTIONS FOR INSTALLING THE FRONT DRIVE SPROCKET WHEEL SHAFT ASSEMBLY

It will be easier to install the router tires if all the air is released from the tires. Set the front drive sprocket pillow block bearings on the router frame. Align the (2) rear holes in the pillow block bearings mounting plate with the (2) holes in the router frame (see drawing 31450B). See photo on page 39.

The head of the bolt must be in the inside of the router frame. The threads will go toward the wheels.

Hardware needed to install the assembly:

- (4) 3/8" - 16 N.C. x 1-1/2" long
- (4) 3/8" flat washer
- (4) 3/8" lock washer

INSTRUCTIONS FOR INSTALLING THE DRIVE TRAIN

Remove master link. Make sure the front sprocket is inline with the sprocket on the drive assembly. Install chain around front sprocket and then around clutch sprocket. Put chain tensioner in the inside of the chain. Install the master link in drive chain. See photo on page 40.

INSTRUCTIONS FOR INSTALLING THE CLUTCH CONTROL CABLE

Install the standard clevis pin (31472) so the head of the standard clevis pin faces the router engine. The standard clevis pin will be installed in the lower outer spring assembly. To install the standard clevis pin move the drive chain up so the cotter pin can be slipped into the back slot of the standard clevis pin. On the back side of the standard clevis pin (1) 6mm flat washer will be used to hold the clevis pin in place. The clevis pin may hit chain if any existing stub is in the spot where the clevis pin goes through, remove it, then install clevis pin. See photo on page 41.

The parts needed for this procedure are:

31471 (1) standard clevis pin
31472 (1) cotter pin 1/32" x 0.75" long
28643 (2) 6 mm flat washer

INSTRUCTIONS FOR INSTALLING THE FRAME CABLE HOLDER

The frame cable holder bracket will be installed in the rear of the engine mount plate.

The hardware used are listed below:

28761 (2) 3/8"-16 N.C. x 1-1/4" hex head bolt
28672 (2) 3/8" flat washer
28526 (2) 3/8" - 16 N.C. ESNA - locknut

See photo on page 42.

See photo on page 43.

Thread the cable nut tensioner into the frame cable holder, the cable nut tensioner on the control cable. See photo on page 42 and 43.

The cable nut tensioner on the control cable will then thread into the handle cable bracket. Install the cotter pin and bend out. See photo on page 29.

INSTRUCTIONS FOR INSTALLING THE FRAME CABLE HOLDER

The existing router will have one existing electrical switch. Install the new switch in the proper location. See photo on page 45. Once the switch is installed move the green wire from the existing switch to the new switch terminal on the passenger side. Install the new power wire switch (part number 31486) on the driver's side terminal to the passenger side outer terminal. See photo on page 45 and 46.

Wire up existing clutch from the existing wiring harness. See photo on page 45.

- Green wire to green wire.
- Black wire to black wire.

INSTRUCTIONS FOR INSTALLING THE TIRES

1. Check to see if space plate is on the hub.
2. Install tire on passenger side.
3. Refill air pressure in both tires to 50 P.S.I. cold.

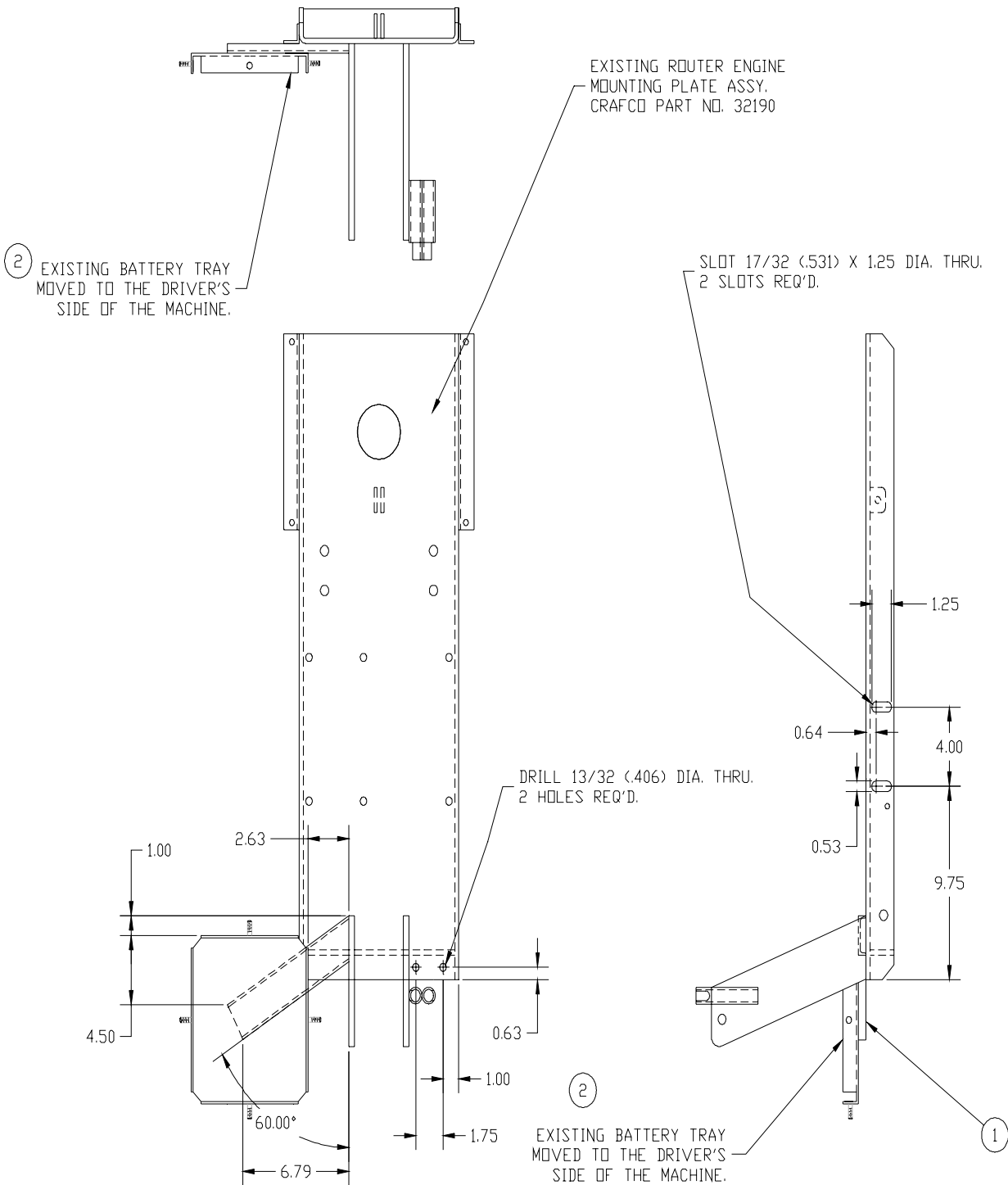
INSTRUCTIONS FOR INSTALLING THE GUARD

Remove existing bolts in the muffler and replace with 6 mm bolts (29044), part no. (28654) 6-mm lock washer, 7/16" flat washer (28636) set guard in place and mark hole to drill in the engine router frame. Take back off and drill holes. Then install guard using 3/8 bolts, 3/8 flat washer, and 3/8 lock washer.

SELF-PROPELLED ROUTER KIT

DRAWING 31450A

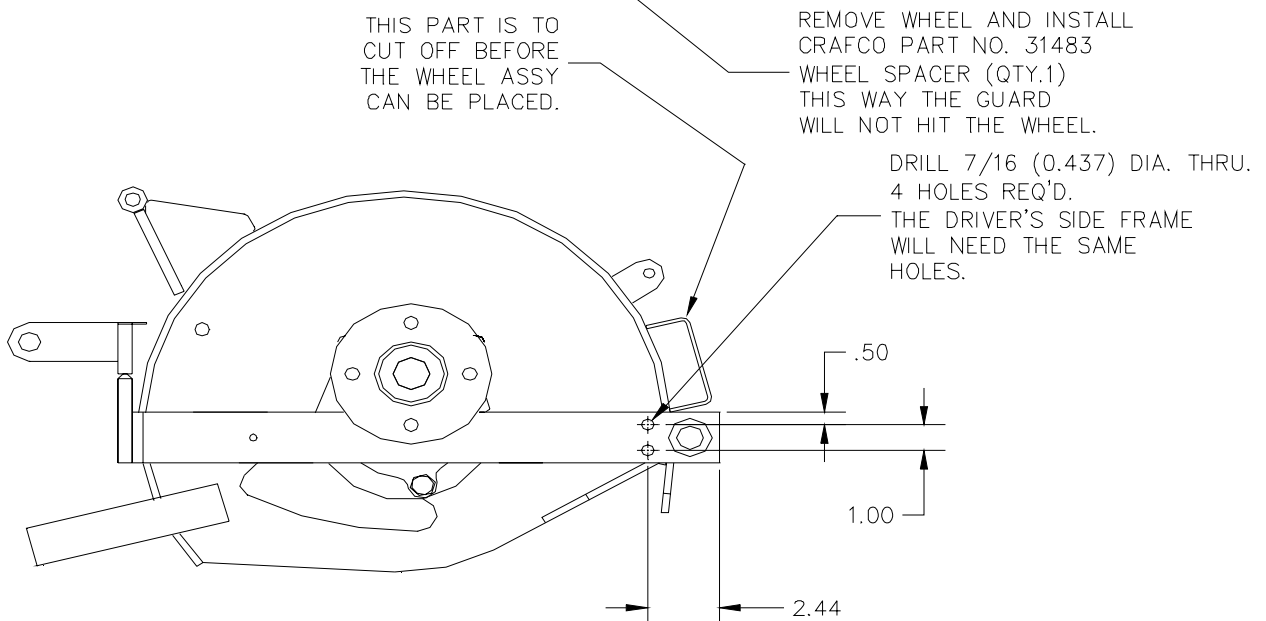
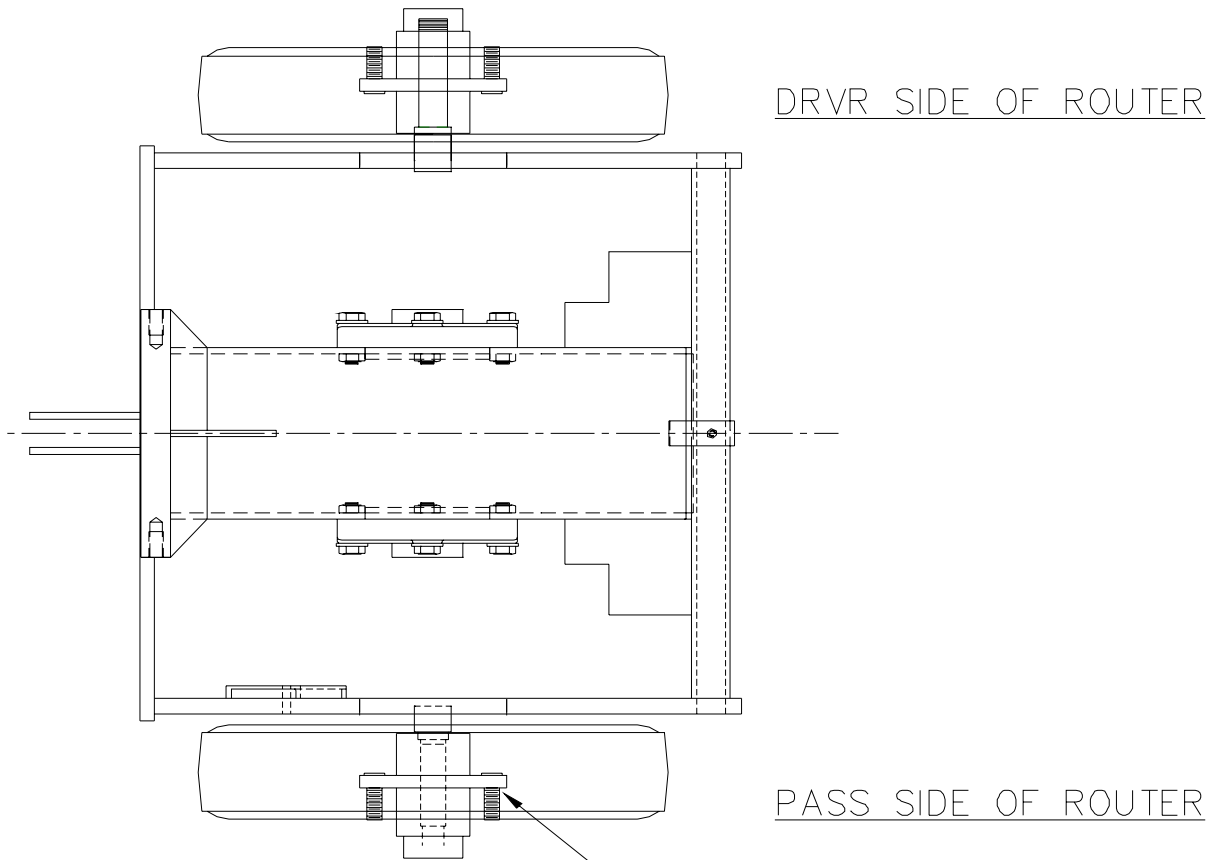
(SEE "D" SIZE DRAWING IN KIT)



SELF-PROPELLED ROUTER KIT

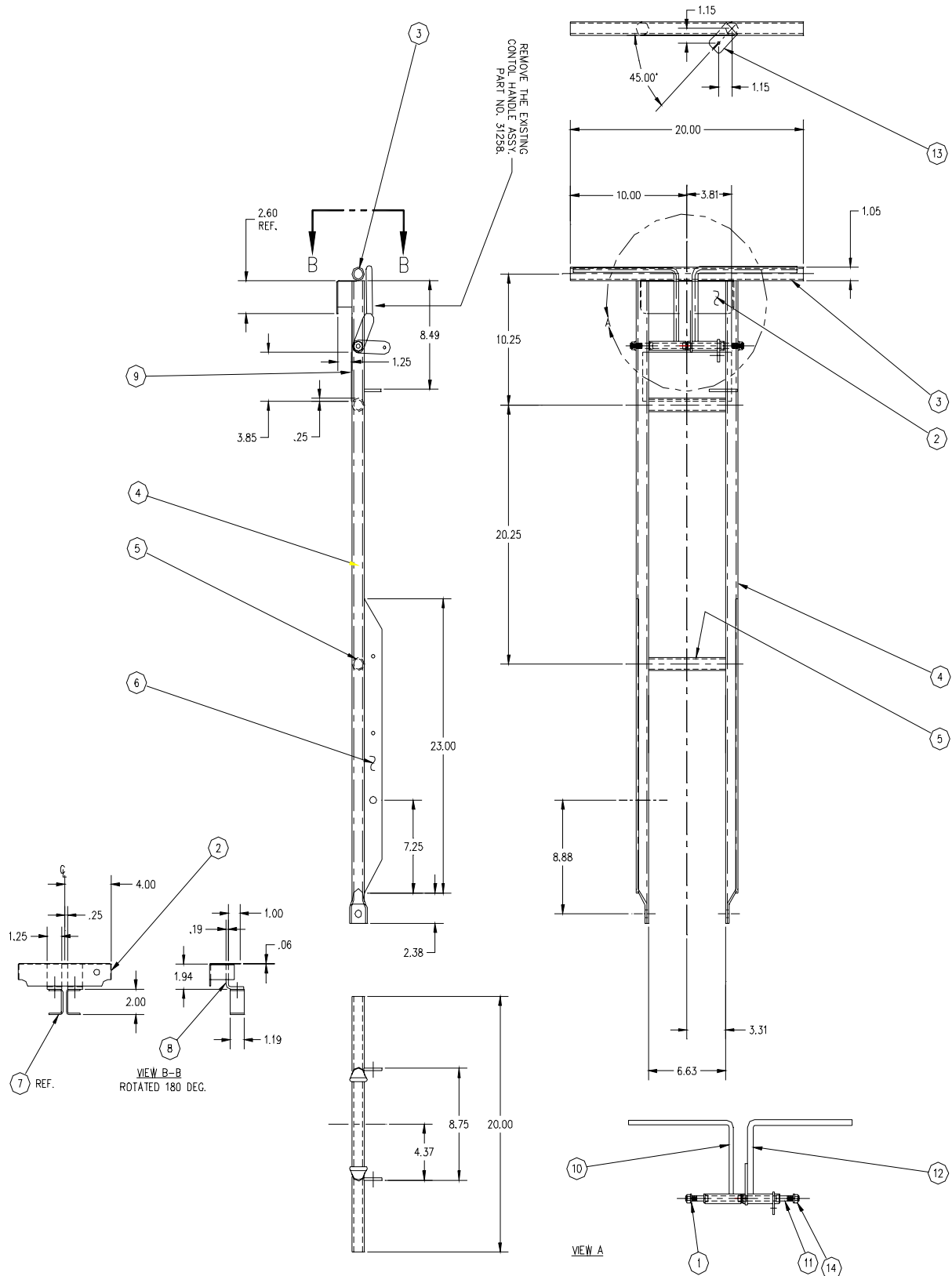
DRAWING 31450B

(SEE "C" SIZE DRAWING IN KIT)



SELF-PROPELLED ROUTER HANDLE ASSEMBLY

DRAWING 31476A (SEE "D" SIZE DRAWING IN KIT)



ROUTER FRAME HOUSING/ DRIVE WHEEL MOUNTING HOLES



DESCRIPTION

Drill 7/16" diameter through 4 holes required. See drawing 31450B. Holes are used for the pillow block mount.

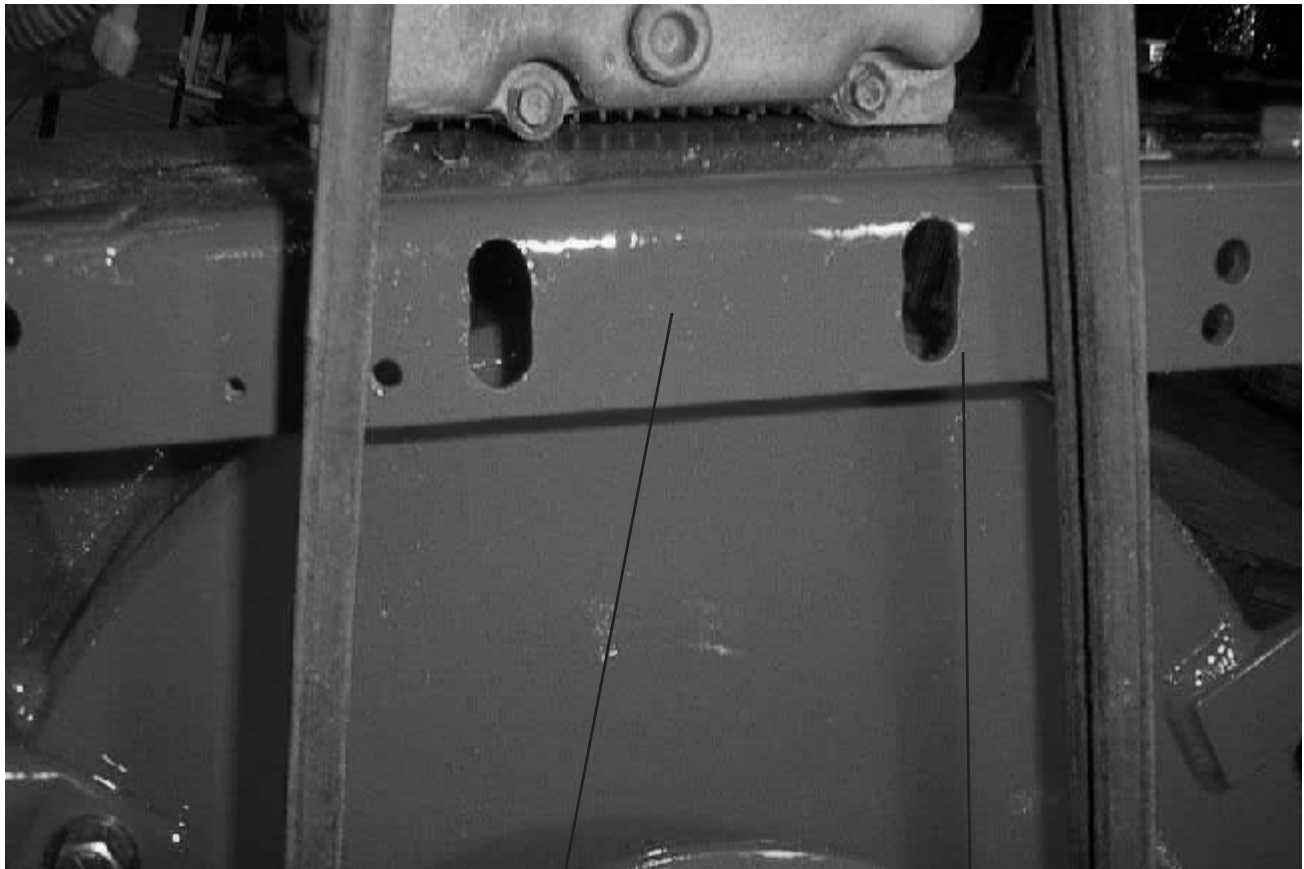
ENGINE SUPPORT PLATE/CABLE BRACKET HOLDER



DESCRIPTION

Drill 13/32" diameter through 2 holes required. See parts manual drawing 31450A. The holes are for the lower frame cable holder part number 31468.

ENGINE SUPPORT PLATE/SPROCKET/ DRIVE PLATE ASSEMBLY

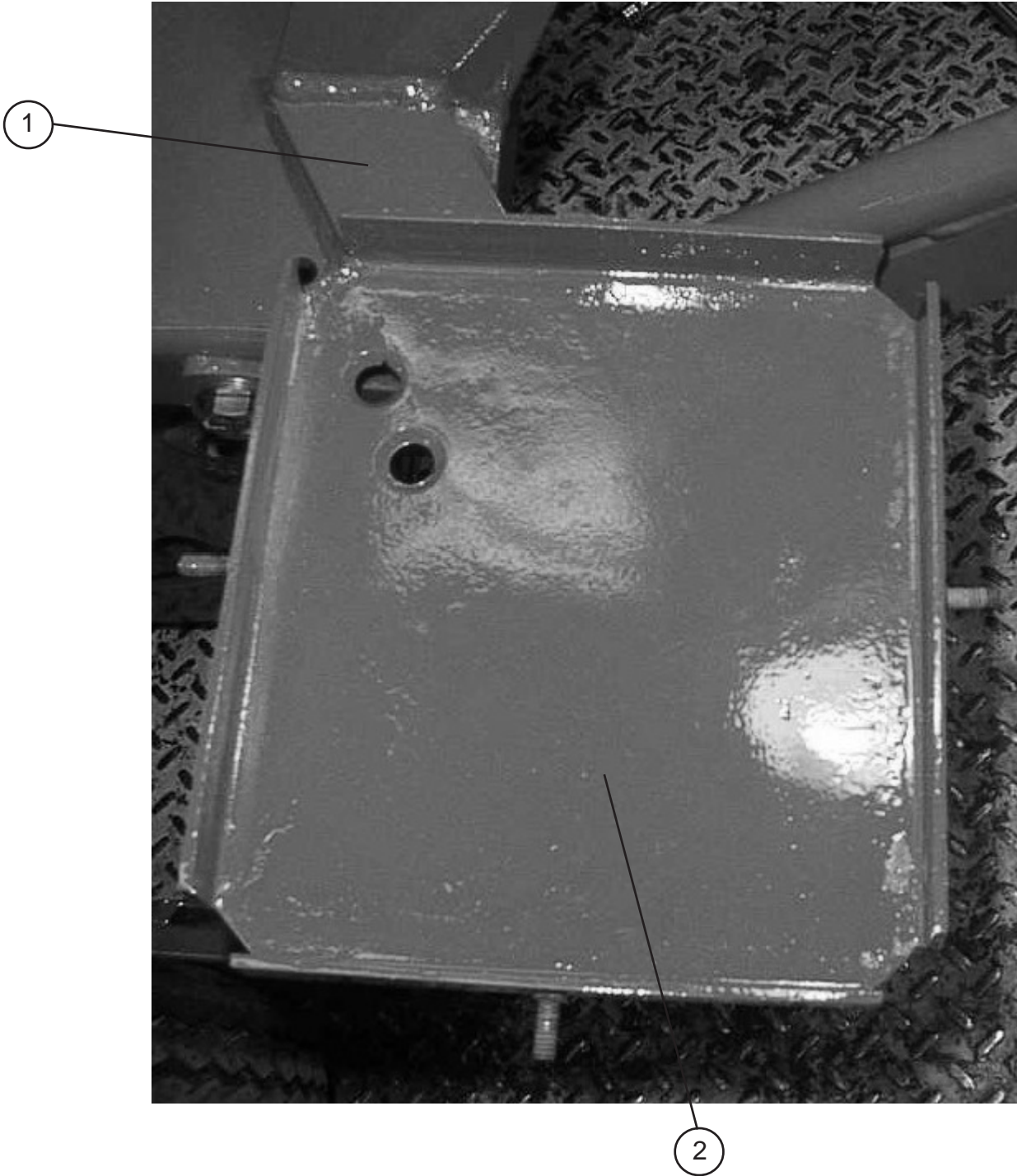


1

2

NUMBER	PART NUMBER	QTY	DESCRIPTION
1	32190	1	ENGINE MOUNTING PLATE ASSEMBLY
2	Slot 17/32" x 1.25 diameter through 2 slots required. See drawing 31450A.		
The slots are used for the frame mount wheel drive kit.			

BATTERY SUPPORT TRAY



NUMBER	PART NUMBER	QTY	DESCRIPTION
1	31481	1	BATTERY TRAY SUPPORT
2	32190	1	EXISTING BATTERY BOX TRAY
2	Cut off the router and move the tray to the driver's side of the machine.		

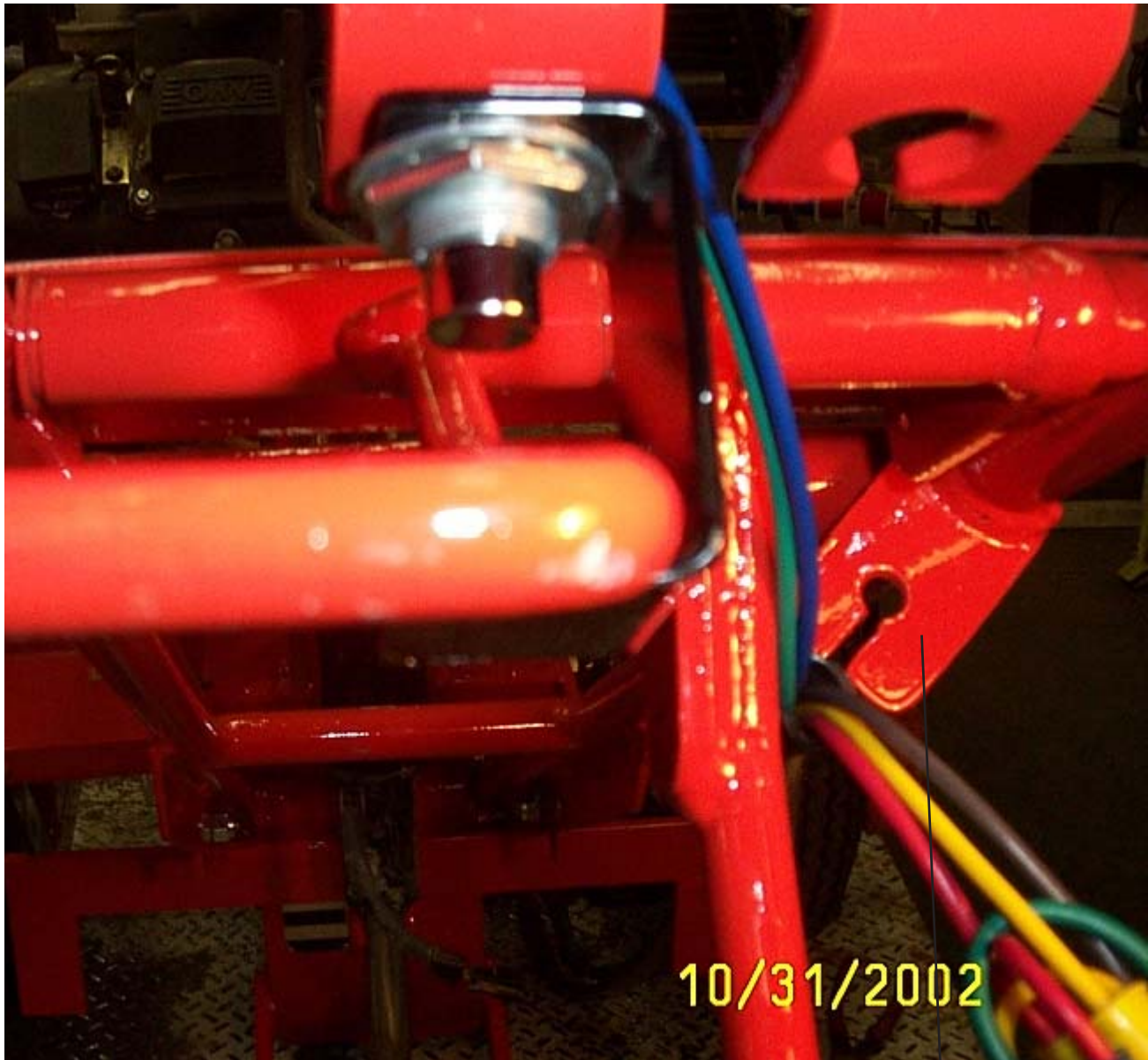
BATTERY SUPPORT TRAY CHANNEL

Existing battery box tray.



NUMBER	PART NUMBER	QTY	DESCRIPTION
1	31481	1	BATTERY TRAY SUPPORT
See drawing 31450A for location.			

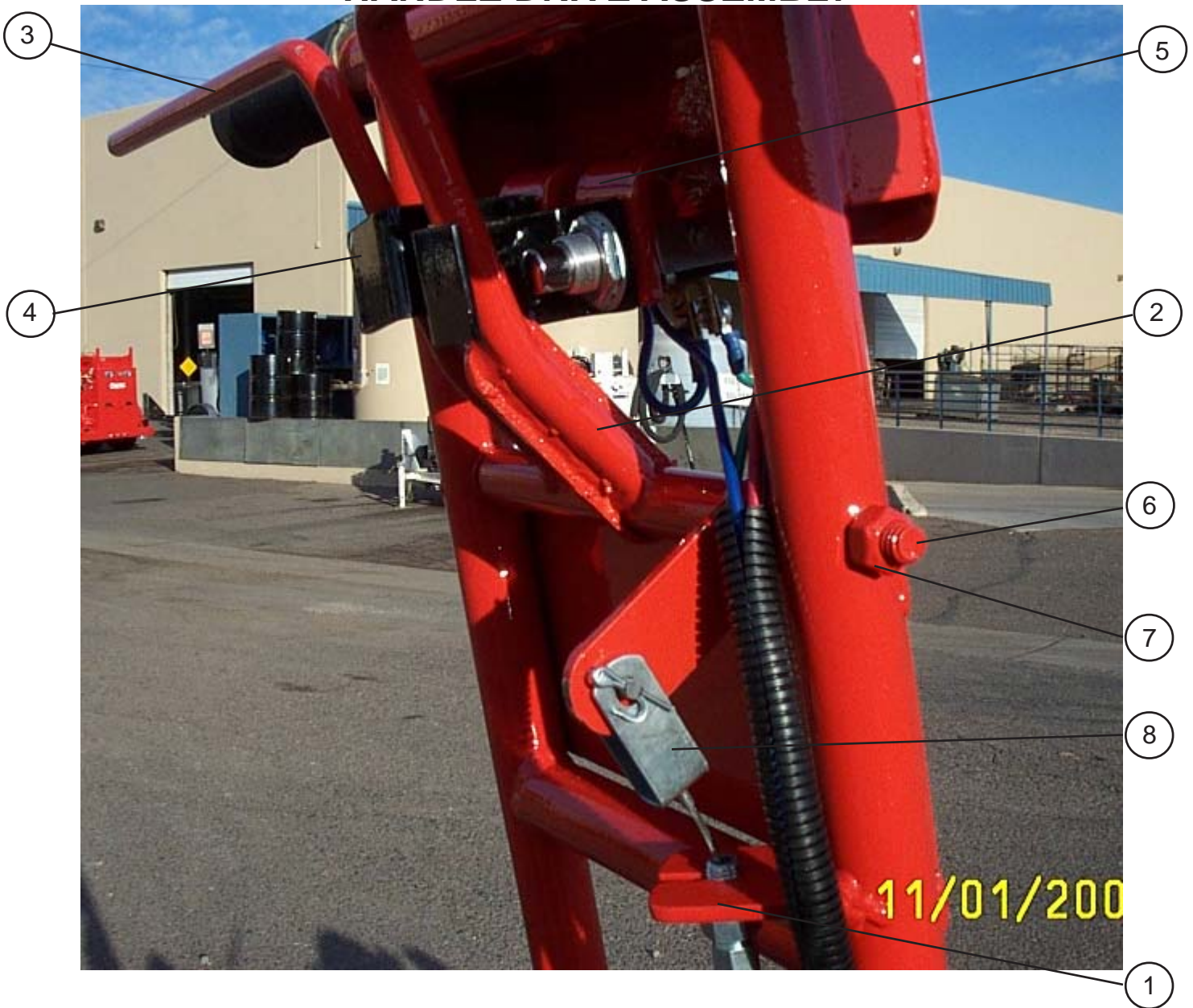
ROUTER HANDLE/CABLE BRACKET HOLDER



1

NUMBER	PART NUMBER	QTY	DESCRIPTION
1	31459	1	CABLE BRACKET HOLDER FRAME
See drawing 31476A.			

ROUTER HANDLE ASSEMBLY/ HANDLE DRIVE ASSEMBLY



NUMBER	PART NUMBER	QTY	DESCRIPTION
1	31459	1	CABLE BRACKET HOLDER FRAME
2	31455	1	HANDLE DRIVE ASSEMBLY PROPELLED
3	31461	1	HANDLE DRIVE ASSEMBLY PROPELLED
4	31477	2	SWITCH HOLDER - SELF PROPELLED
5	31337	2	SWITCH HOLDER
6	31452	1	PIVOT PIN-ROUTER HANDLE
7	28538	2	3/8-16 STOVER C-TOP NUT
8	31460	1	CABLE

See drawing 31476A.

DRIVE CABLE/CABLE BRACKET HOLDER



Existing router handle.

NUMBER	PART NUMBER	QTY	DESCRIPTION
1	31459	1	CABLE BRACKET HOLDER FRAME
2	31460	1	CABLE

See drawing 31476A.

ROUTER CUTTER HEAD HANDLE DRIVE ASSEMBLY



2

3

1

NUMBER	PART NUMBER	QTY	DESCRIPTION
1	28672	6	WASHER 3/8" SAE FLAT
2	31452	1	PIVOT PIN-ROUTER HANDLE
3	28638	2	3/8-16 STOVER C-TOP NUT

See drawing 31476A.

ENGINE CRACK SHAFT/CLUTCH INNER WASHER



NUMBER	PART NUMBER	QTY	DESCRIPTION
1	28688	1	CLUTCH INNER WASHER
2	28688	1	ADD ANOTHER CLUTCH INNER WASHER

CLUTCH, PULLEYS, ROUTER HEAD PULLEYS/ CUTTER HEAD BELTS

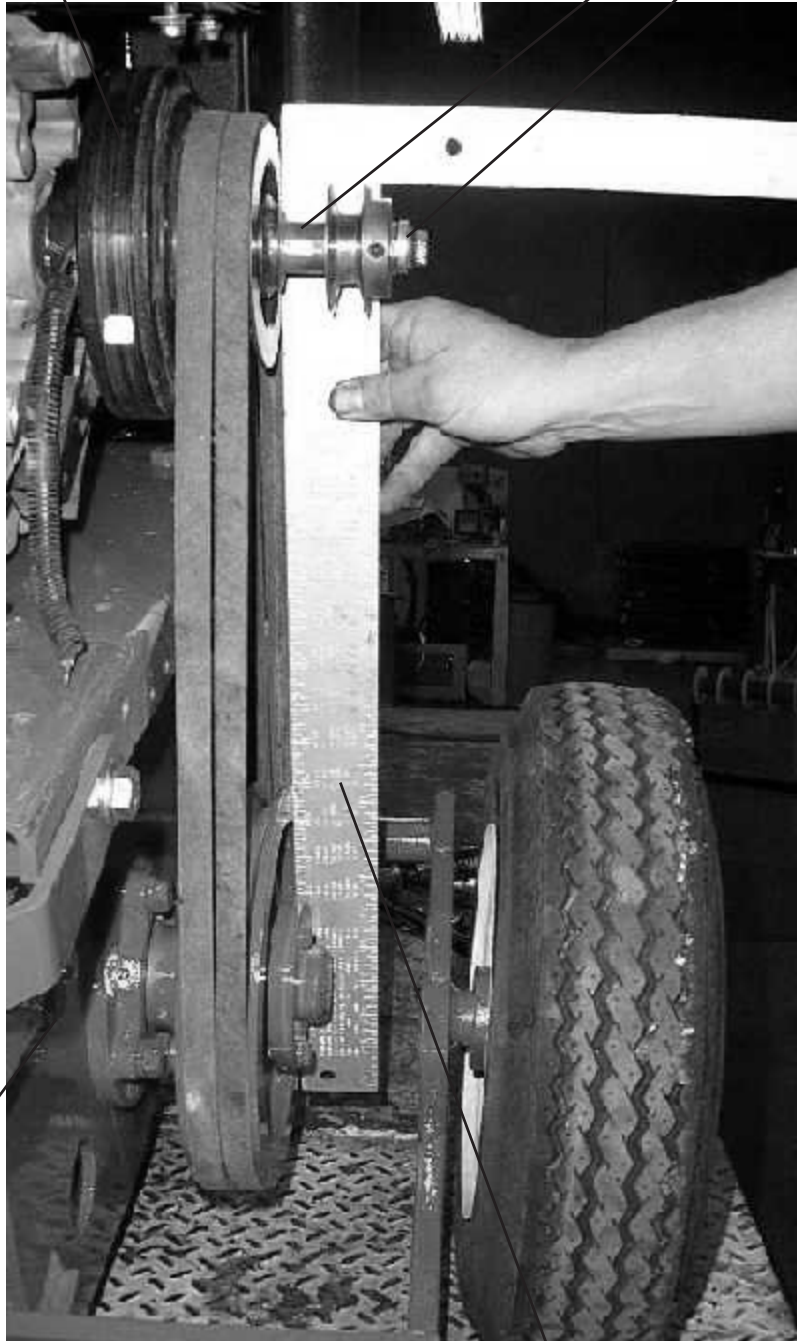
Existing router clutch with stub shaft.

1

2

3

4



Existing router cutter head belts.

Alignment of the pulleys.

NUMBER	PART NUMBER	QTY	DESCRIPTION
1	31487	1	STUB SHAFT SELF-PROPELLED ROUTER
2	28903	1	7/16-20x 4.0" BOLT (GRADE 8) TORQUE TO 58 FT-LBS. USE RED LOCTITE ON THRDS.
3	28648	1	7/16" LOCK WASHER
4	28673	2	7/16" FLAT WASHER
-	-	-	NOT USED

CLUTCH ELECTRIC WIRING



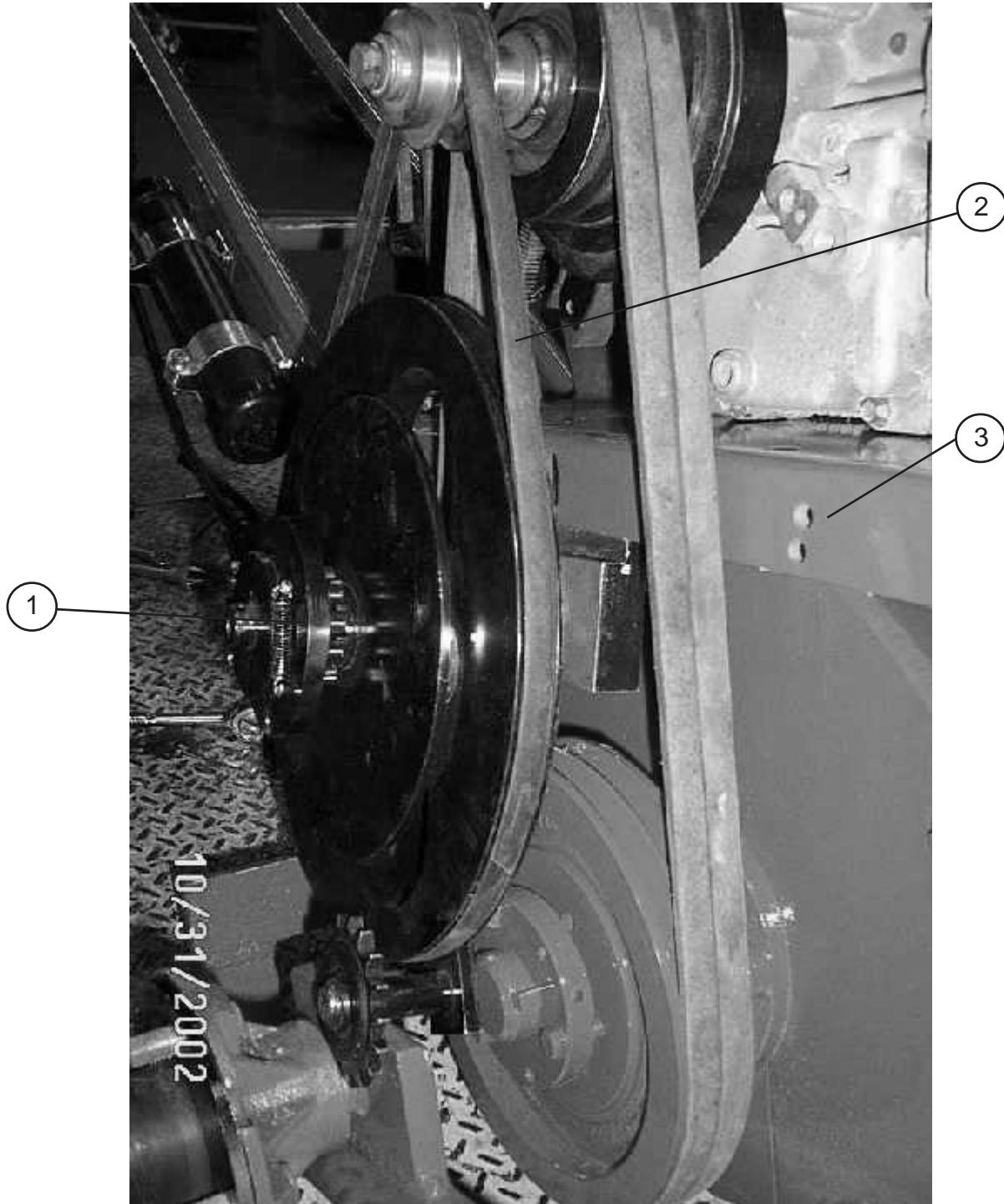
NUMBER	DESCRIPTION
1	BLACK GROUND WIRE FROM THE EXISTING CLUTCH.
2	ELECTRIC CLUTCH TAB.

ROUTER HUB/WHEEL SPACER



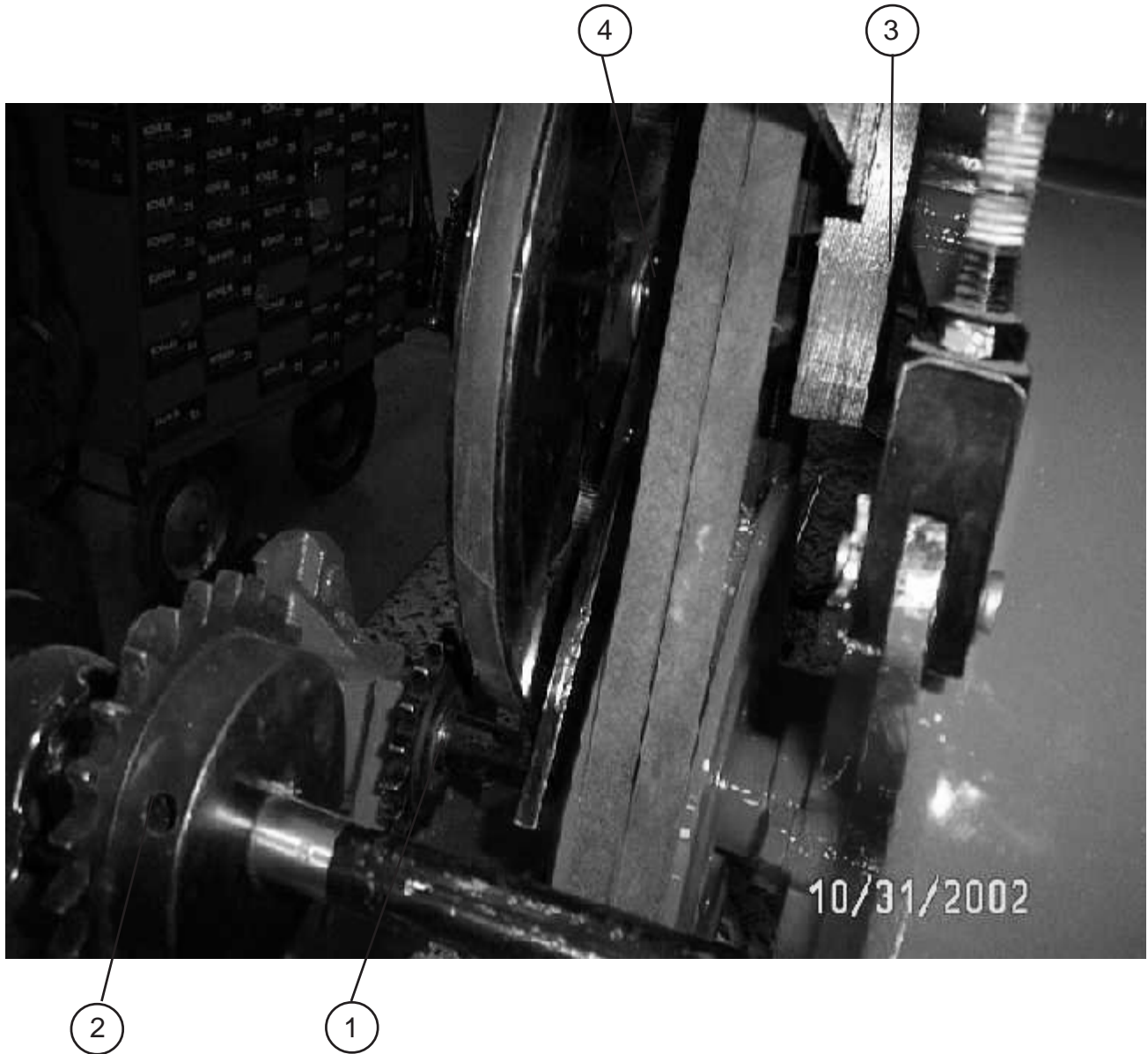
PART NUMBER	QTY	DESCRIPTION
31483	1	WHEEL SPACER-SELF PROPELLED ROUTER

SELF-PROPELLED ROUTER WHEEL DRIVE KIT



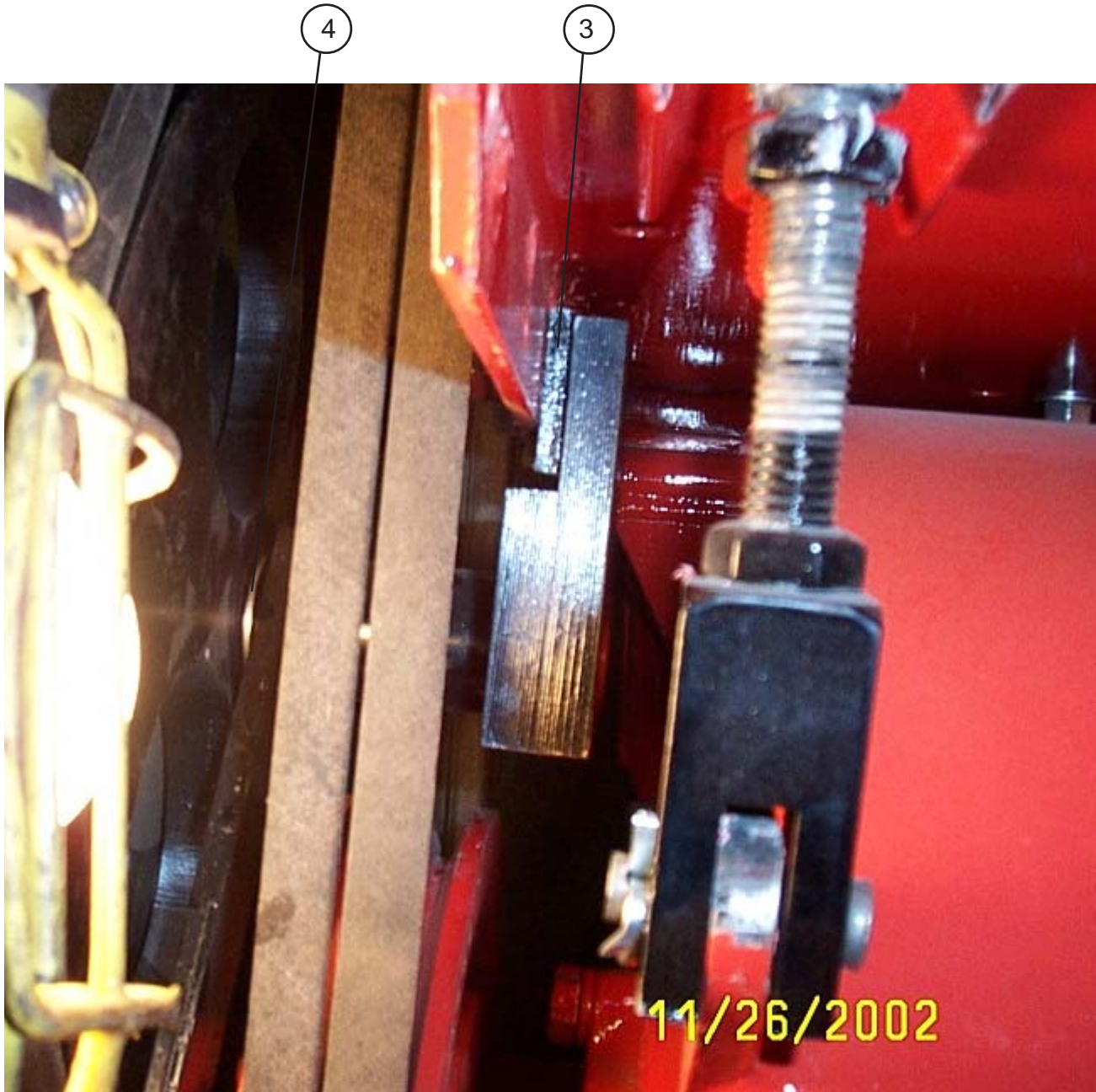
NUMBER	PART NUMBER	QTY	DESCRIPTION
1	31480	1	SELF-PROPELLED ROUTER WHEEL DRIVE KIT
2	31478	1	BELT A-43 ROUTER
3	Existing router frame.		

ENGINE SUPPORT FRAME SPACER



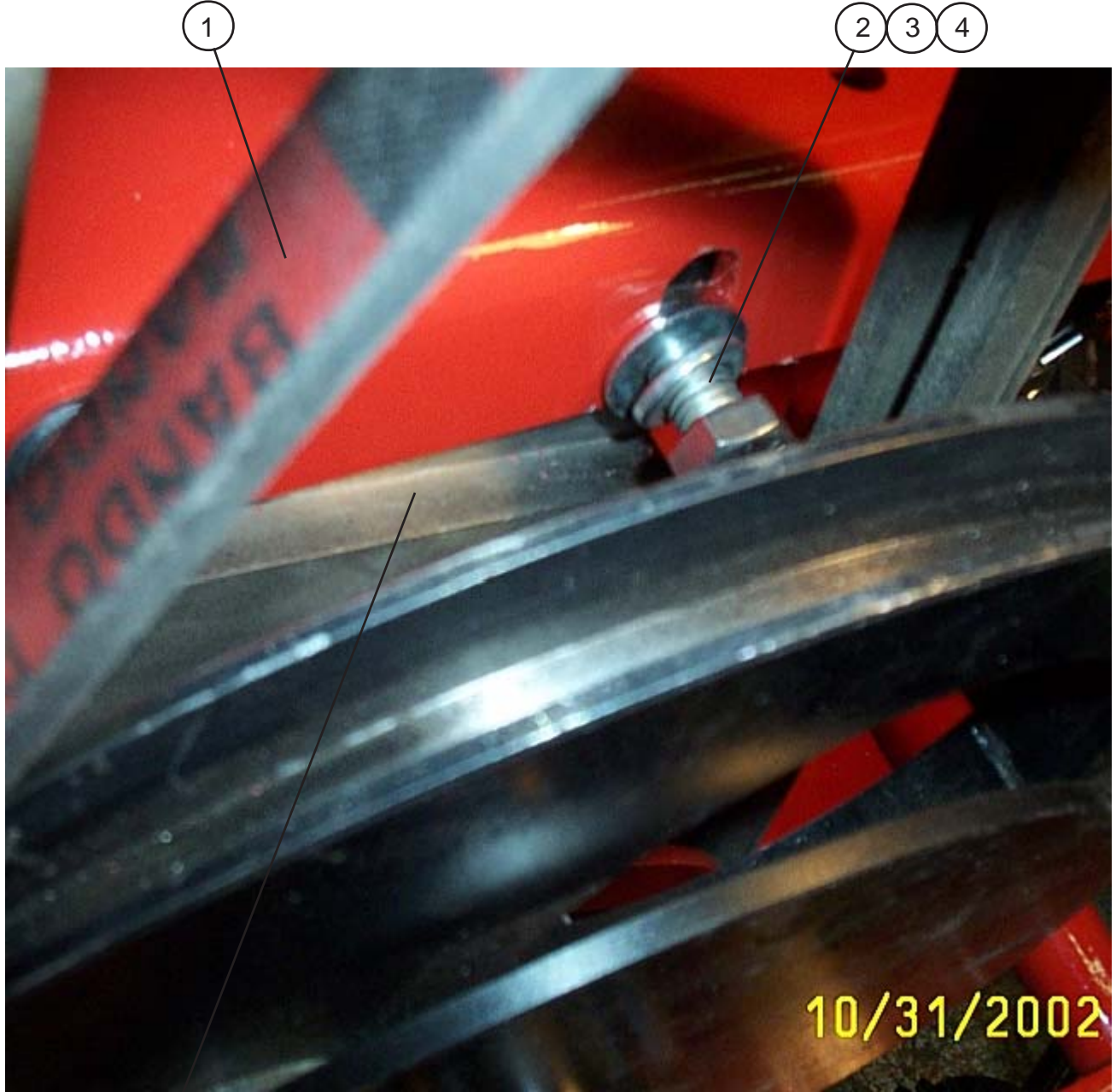
NUMBER	PART NUMBER	QTY	DESCRIPTION
1	Idler sprocket (17 tooth).		
2	Front of machine.		
3	31484	1	SPACER-ROUTER CLUTCH PLATE
4	31485	1	5/8" FLAT WASHERS

ENGINE SUPPORT FRAME SPACER



NUMBER	PART NUMBER	QTY	DESCRIPTION
3	31484	1	SPACER-ROUTER CLUTCH PLATE
4	31485	1	5/8" FLAT WASHERS

ENGINE SUPPORT FRAME HARDWARE



5

NUMBER	PART NUMBER	QTY	DESCRIPTION
1	31478	1	BELT A-43 ROUTER
2	28761	2	1/2"-13 x 1-1/4" BOLT
3	28636	2	1/2" FLAT STEEL WASHER
4	28649	2	1/2" LOCK WASHER
5	31484	1	SPACER-ROUTER CLUTCH PLATE

For the frame mount, the spacer goes in between the frame mount and the router engine frame.

ROLLER CHAIN SPROCKET/PILLOW BLOCK BEARING



Hardware: bolt, lockwashers, flat washer

DRIVE CHAIN/MASTER LINK/SPROCKET/IDLER



1 2

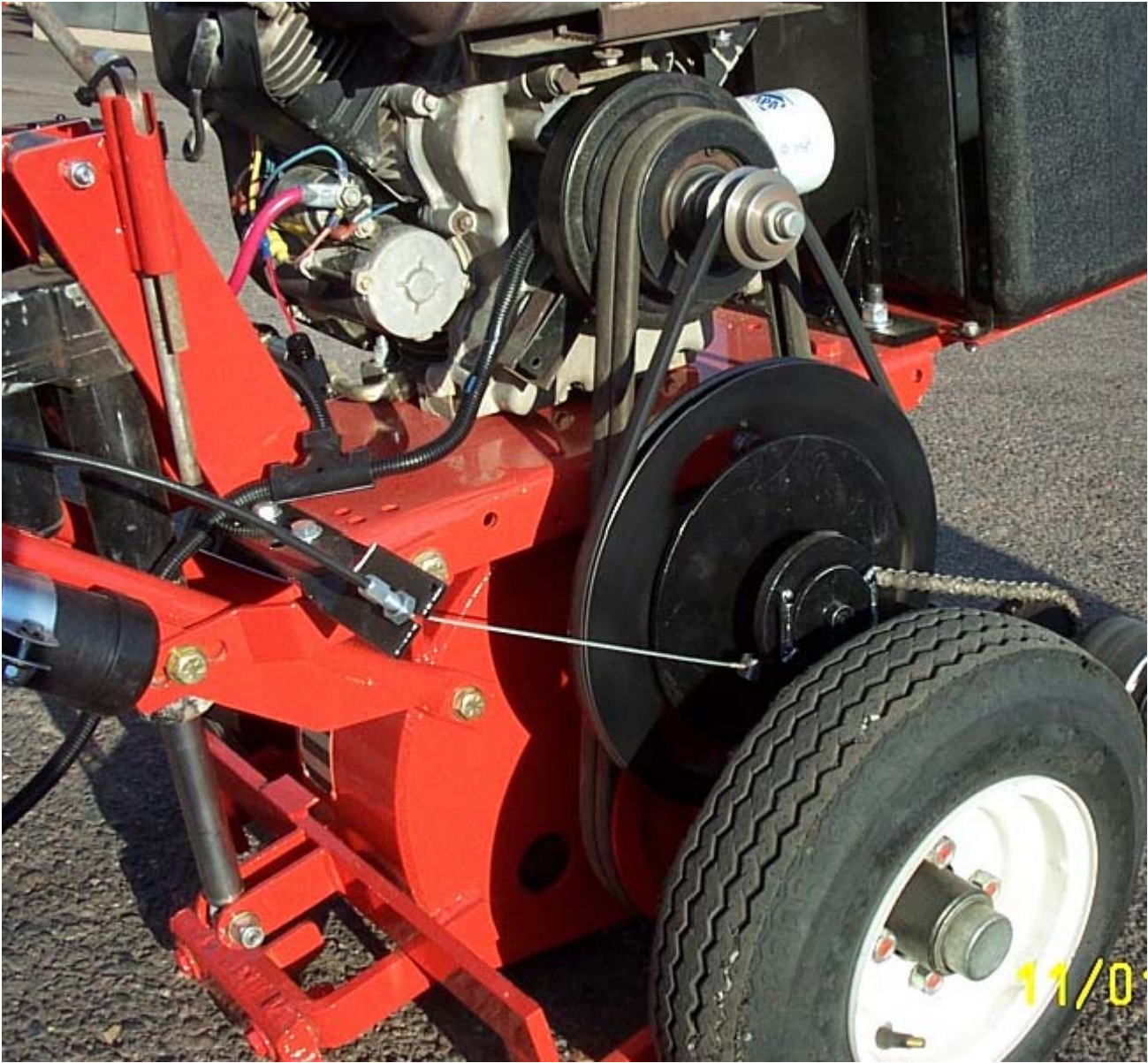
NUMBER	PART NUMBER	QTY	DESCRIPTION
1	39524	1	MASTER LINK - #40 (INSULATION BLOWER)
2	31479	1	DRIVE CHAIN - ROUTER

DETENT-DRIVE/CABLE CLEVIS PIN



NUMBER	PART NUMBER	QTY	DESCRIPTION
1	31471	2	STANDARD CLEVIS PIN
2	31472	2	COTTER PIN 3/32" X 0.75 LONG
3	Installation of the engagement cable into the detent release.		

SIDE VIEW OF THE SELF-PROPELLED ROUTER KIT



ENGINE SUPPORT FRAME/CABLE BRACKET HOLDER

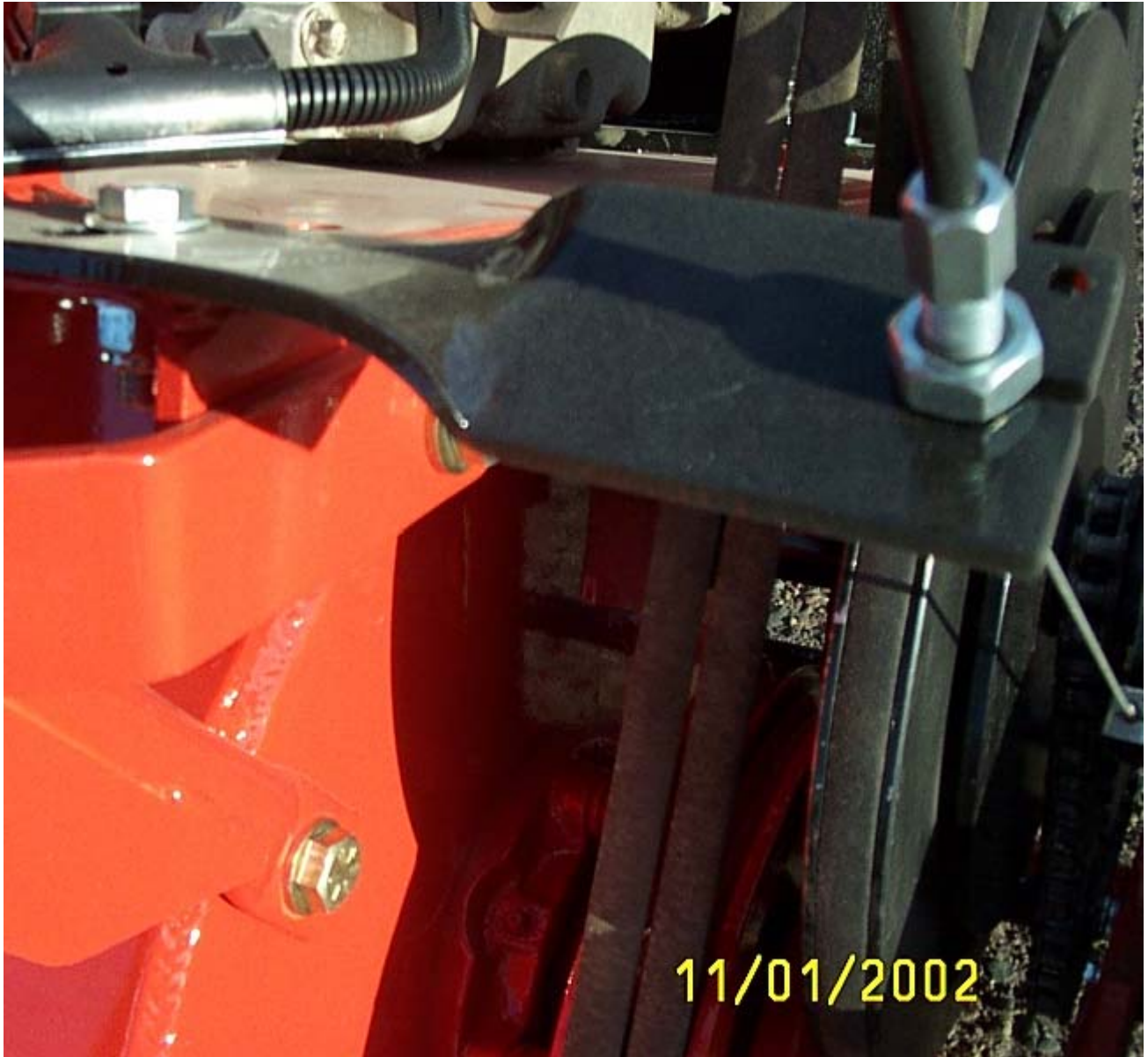


1

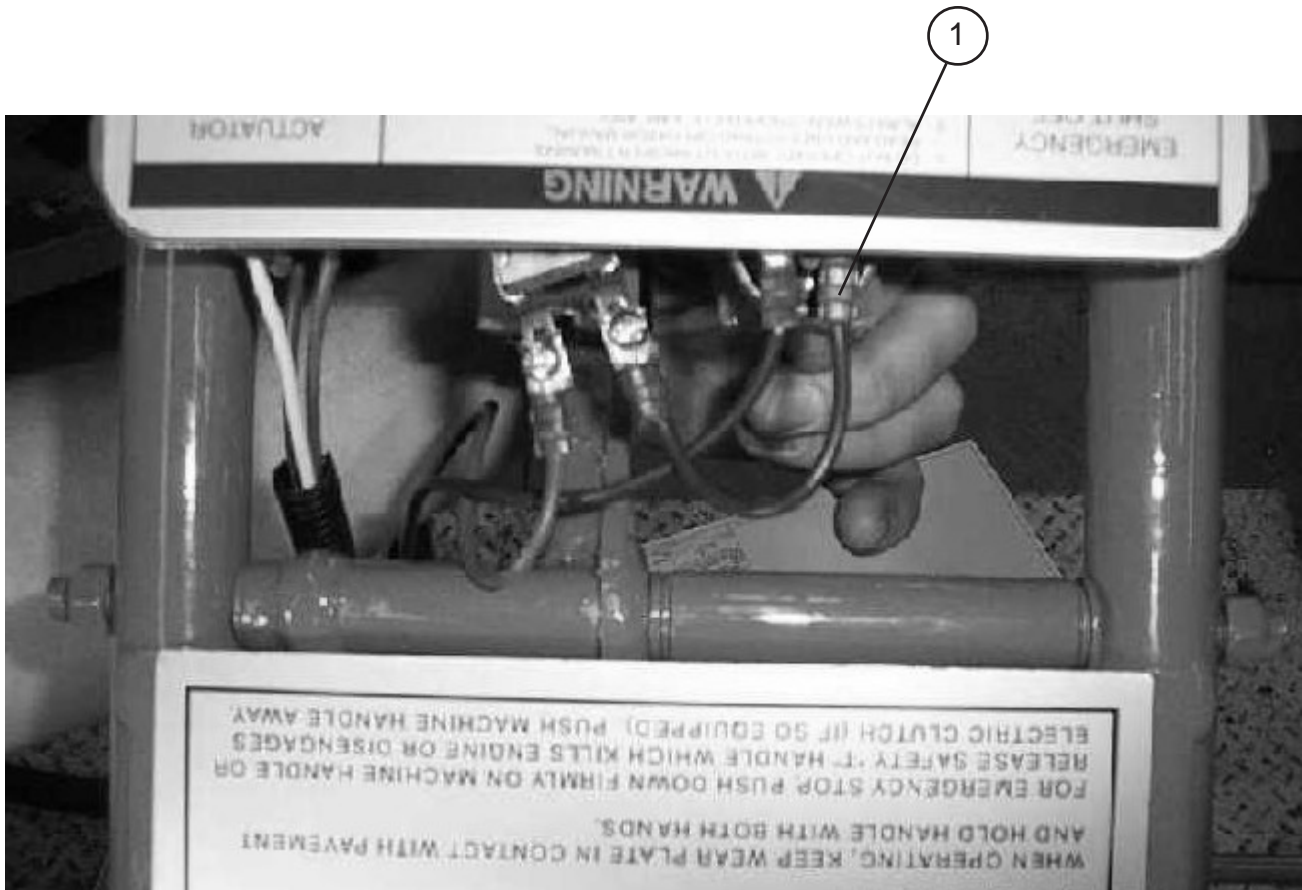
4

NUMBER	PART NUMBER	QTY	DESCRIPTION
1	28761	2	3/8"-16 NC X 1-1/4" HEX HEAD BOLT
2	28672	2	3/8" FLAT WASHER
3	28526	2	3/8" - 16 NC ESNA-LOCK NUT
4	31459	1	CABLE BRACKET HOLDER FRAME

CABLE BRACKET HOLDER



HANDLE DRIVE SWITCH CONTROL WIRING

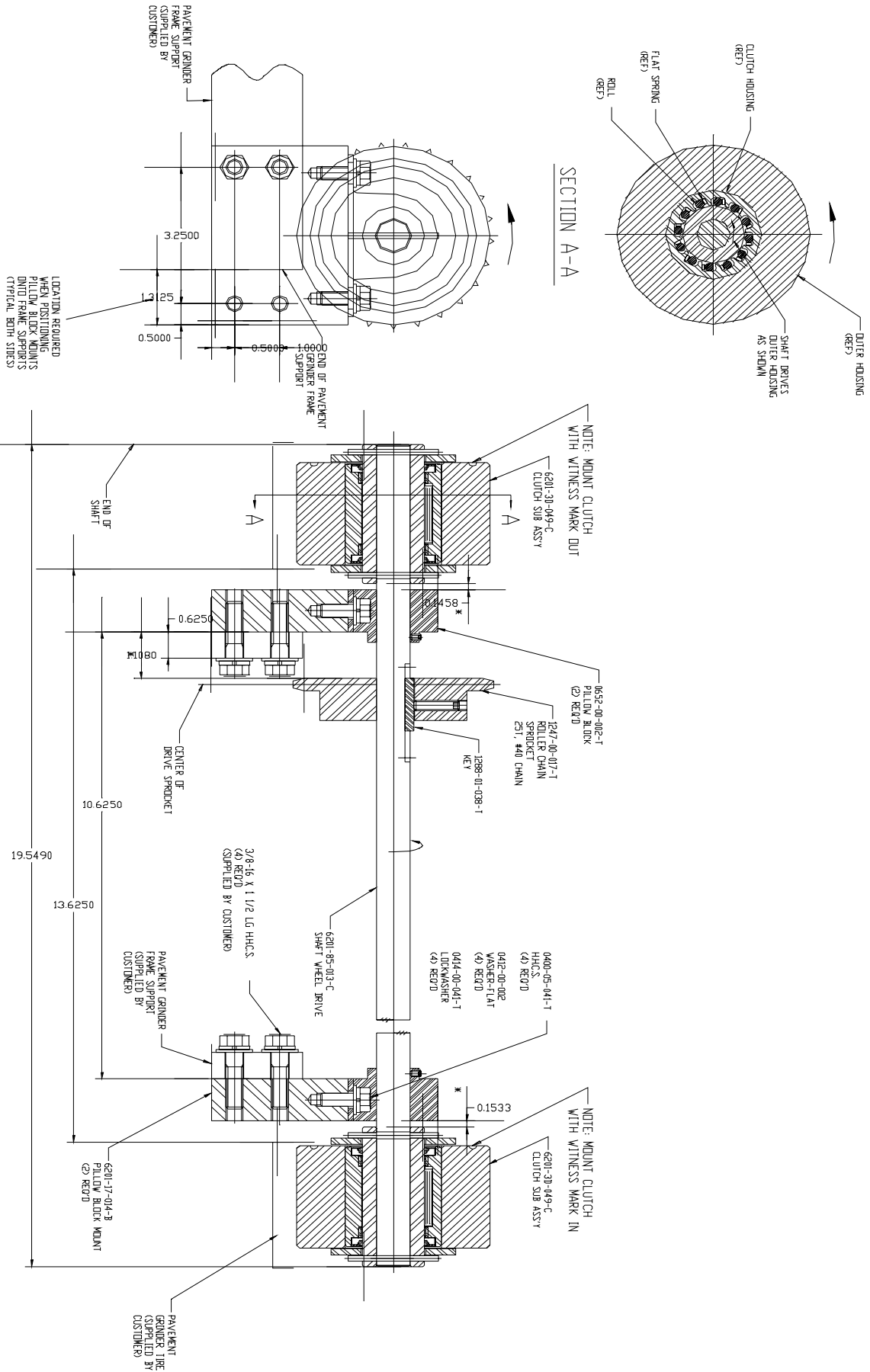


PART NUMBER	QTY	DESCRIPTION
31486	1	POWER WIRE-SWITCH ROUTER

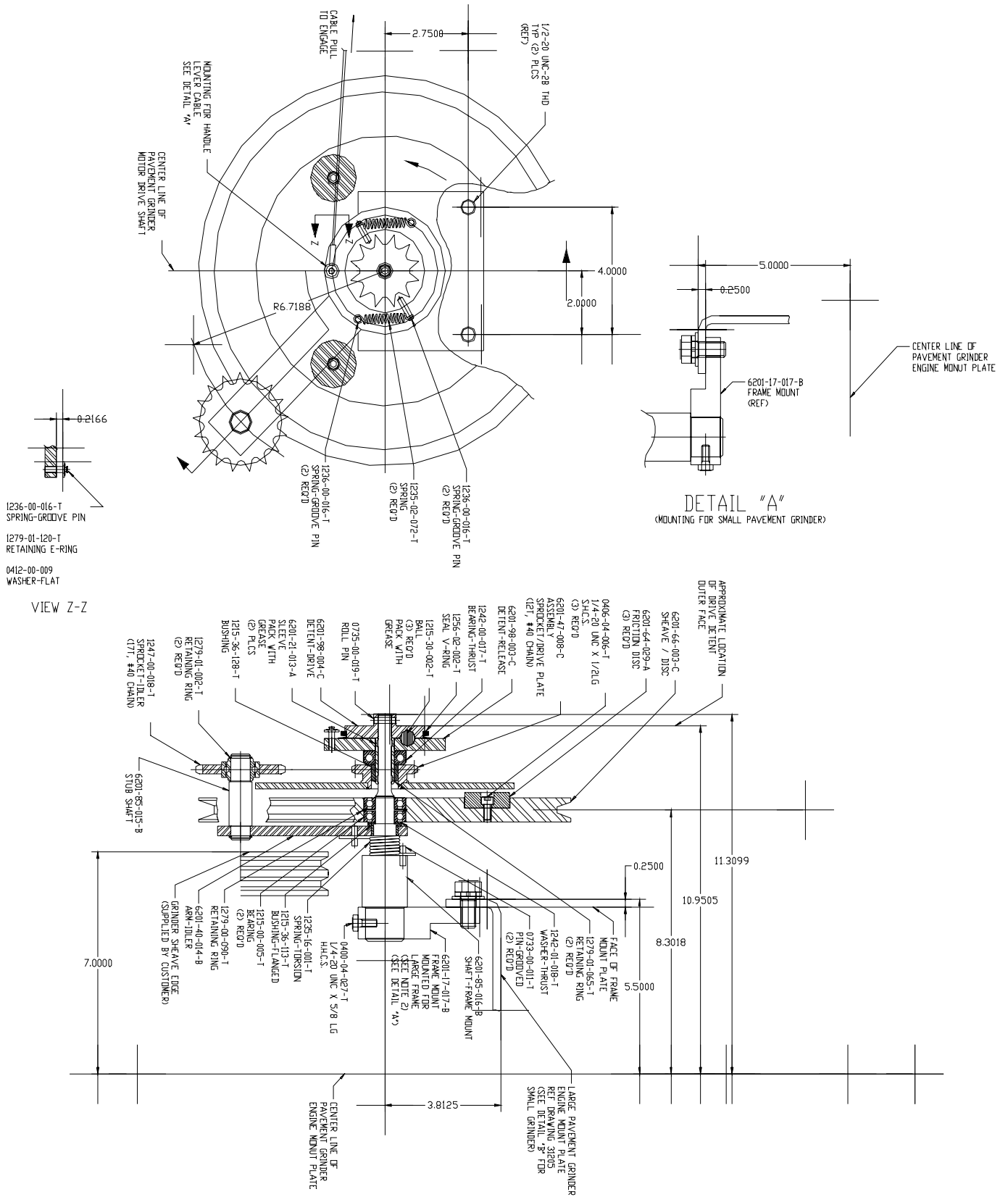
HANDLE DRIVE SWITCH CONTROL WIRING



DRIVE WHEEL CLUTCH ASSEMBLY



SELF-PROPELLED DRIVE SYSTEM



**Pioneering Leadership and
Innovation in Quality
Pavement Maintenance
Materials.**



**25527 South Arizona Avenue · Chandler, Arizona 85248
480-655-8333 · 1-800-528-8242
Sales@Crafco.com
CustomerService@Crafco.com
Fax 480-655-1712**